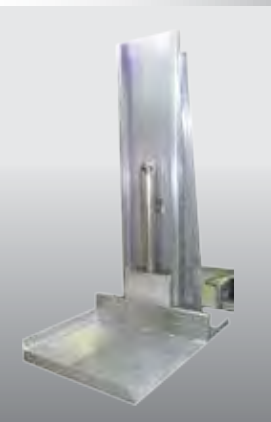
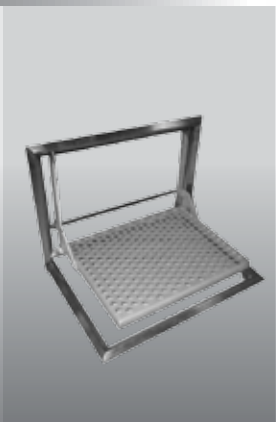
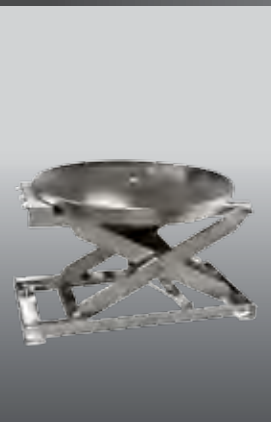


POWER-LIFTS

STAINLESS STEEL LIFTS & HANDLING EQUIPMENT
NOTTINGHAM UK

Tel: 0115 926 9996

**LIFT EQUIPMENT
FOR FOOD AND PHARMACEUTICAL COMPANIES**



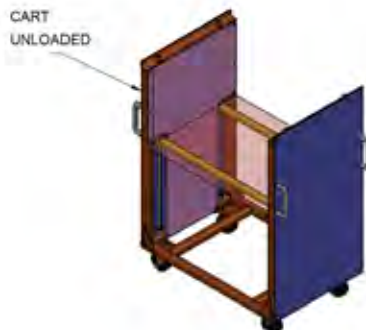
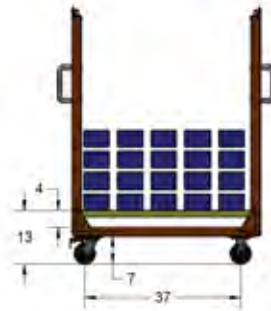
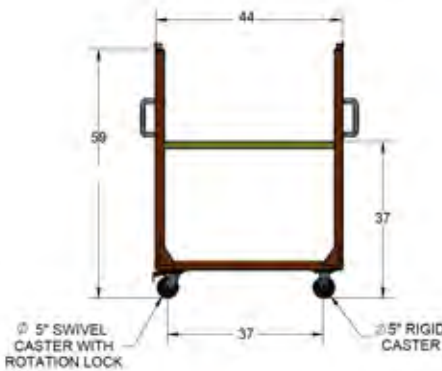
Stainless Steel Self Adjusting Push Carts

Features

- Ergonomic positioning from 13 to 37 inches
- 304L and 316L North American Stainless Steel number 4 finish
- No power required
- ATEX proof available
- Oversized platform and custom sizes available
- Self contained stainless springs in smooth hygienic finish, easy to clean wash down
- Anti static wheels



Drawings



Custom sizes & painted units available



Stainless Steel High Lift Scissor Truck - Electric

Features

- World class quality and performance
- For using in meat and other food industry, dairy canning and all areas where corrosive acids and saline solutions are used
- Single stage cylinder
- No decrease of capacity
- No risk of leakage
- No dangerous dropping of second stage cylinder
- With built-in charger or built-out charger on customer's request



Specifications

	ACS154M	ACS1068M	ACS1554M	ACS1558M
Type	Electric	Electric	Electric	Electric
Rated Capacity	1,000kg 2,204lb	1,000kg 2,204lb	1,500kg 3,306lb	1,500kg 3,306lb
Max. Fork Height	800mm 315in	800mm 315in	800mm 315in	800mm 315in
Min. Fork Height	85 ± 2mm 33.5in ± 0.75in	85 ± 2mm 33.5in ± 0.75in	85 ± 2mm 33.5in ± 0.75in	85 ± 2mm 33.5in ± 0.75in
Size of Fork	160mm x 50mm 63in x 19.6in	160mm x 50mm 63in x 19.6in	160mm x 50mm 63in x 19.6in	160mm x 50mm 63in x 19.6in
Width Overall Fork	540mm 21in	680mm 26.7in	540mm 21in	680mm 26.7in
Length of Fork	1150mm 452.7in	1150mm 452.7in	1150mm 452.7in	1150mm 452.7in
Fork Roller	80mm x 70mm 31.4in x 27.5in	80mm x 70mm 31.4in x 27.5in	80mm x 70mm 31.4in x 27.5in	80mm x 70mm 31.4in x 27.5in
Steering Wheel	180mm x 50mm 70.8in x 19.6in	180mm x 50mm 70.8in x 19.6in	180mm x 50mm 70.8in x 19.6in	180mm x 50mm 70.8in x 19.6in
Battery	12V/60AH	12V/60AH	12V/60AH	12V/60AH
Lifting Motor	0.8 KW	0.8 KW	0.8 KW	0.8 KW
Net Weight	155kg 341lb	160kg 352lb	160kg 352lb	165kg 286.6lb



Stainless Steel High Lift Scissor Truck - Manual

Features

- World class quality and performance
- For using in meat and other food industry, dairy canning and all areas where corrosive acids and saline solutions are used
- Single stage cylinder
- No decrease of capacity
- No risk of leakage
- No dangerous dropping of second stage cylinder



Specifications

	ACS154M	ACS1068M	ACS1554M	ACS1558M
Type	Manual	Manual	Manual	Manual
Rated Capacity	1,000kg 2,204lb	1,000kg 2,204lb	1,500kg 3,306lb	1,500kg 3,306lb
Max. Fork Height	800mm 315in	800mm 315in	800mm 315in	800mm 315in
Min. Fork Height	85 ± 2mm 33.5in ± 0.75in	85 ± 2mm 33.5in ± 0.75in	85 ± 2mm 33.5in ± 0.75in	85 ± 2mm 33.5in ± 0.75in
Size of Fork	160mm x 50mm 63in x 19.6in	160mm x 50mm 63in x 19.6in	160mm x 50mm 63in x 19.6in	160mm x 50mm 63in x 19.6in
Width Overall Fork	540mm 21in	680mm 26.7in	540mm 21in	680mm 26.7in
Length of Fork	1150mm 452.7in	1150mm 452.7in	1150mm 452.7in	1150mm 452.7in
Fork Roller	80mm x 70mm 31.4in x 27.5in	80mm x 70mm 31.4in x 27.5in	80mm x 70mm 31.4in x 27.5in	80mm x 70mm 31.4in x 27.5in
Steering Wheel	180mm x 50mm 70.8in x 19.6in	180mm x 50mm 70.8in x 19.6in	180mm x 50mm 70.8in x 19.6in	180mm x 50mm 70.8in x 19.6in
Net Weight	120kg 264lb	125kg 275lb	125kg 275lb	130kg 286.6lb



Stainless Steel Stacker Roll Lift

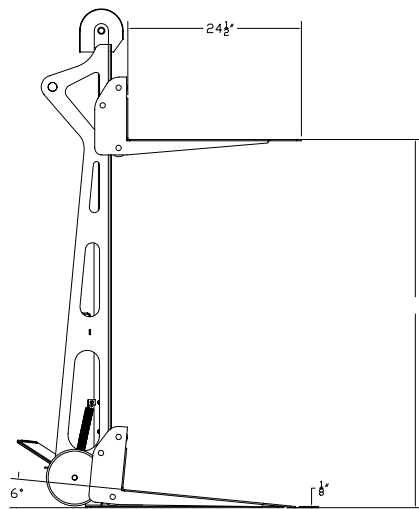
Features

- 304L or 316L Stainless Steel
- Winch or Foot Pump Style
- Up to 2 metre Lift Height V Groove Platform
- Core Ram available
- American Made Foot Pump
- With or Without Load Wheels

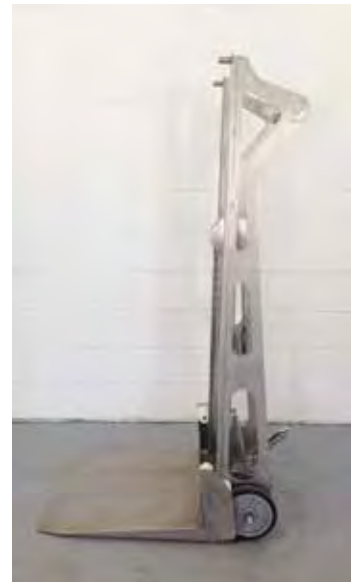
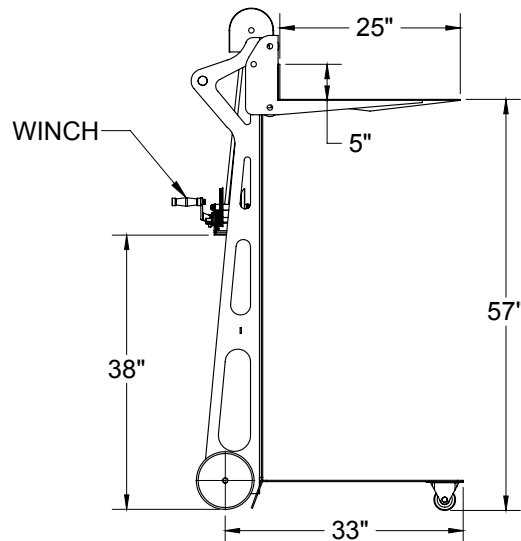


Drawings

Foot pump style



Winch style





Stainless Steel Work Positioner

Features

- SUS304 material, good for corrosive acids application
- Ideal for use in narrow aisles and confined spaces
- Perfect for all applications from pharmaceutical to catering, from packing line to food processing, from warehouse to office, kitchens, laboratories, retail outlet
- Operated via a manual hand winch
- Auto brake system prevents uncontrolled lowering
- With standard PE platform, stainless steel platform as option
- Quick change attachment options available



Technical data

MODEL:	M100S	M200S
TYPE:	Manual	Manual
CAPACITY:	100kg 220lbs	200kg 440lbs
LOAD CENTRE:	235mm 9.2"	235mm 9.2"
MIN. HEIGHT:	1500mm 59"	1500mm 59"
MAX. HEIGHT:	130mm 5.2"	130mm 5.2"
PLATFORM SIZE:	470mm x 600mm 18.5" x 23.6"	470mm x 600mm 18.5" x 23.6"
LOAD WHEEL:	ø75 2.9"	ø75 2.9"
STEERING WHEEL:	ø125 4.2"	ø125 4.2"
NET WEIGHT:	50kg 110lbs	60kg 132lbs



Stainless Steel Drum Lift

Removes drums from Pallets and containment skids

- Capacity to 990 lbs or 450 Kgs
- 100 % 304 L stainless steel
- Lockable casters, stainless steel cylinder



Technical data

Model	SL SS DL
Lifting Capacity	450kg
Lifting Height	500mm
Lifting per stroke	11.6mm
Drum Size	572mm (22.5" Diam) 210Liters (550gallon)
Net Weight	165kg

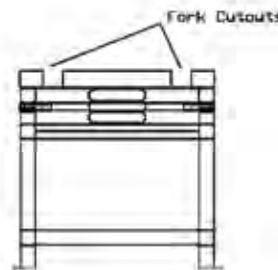
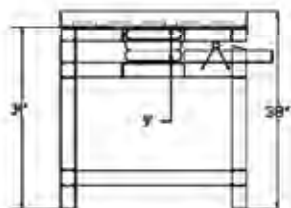
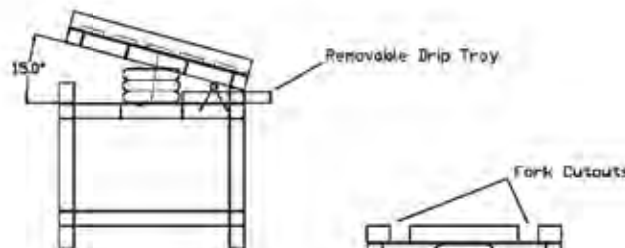
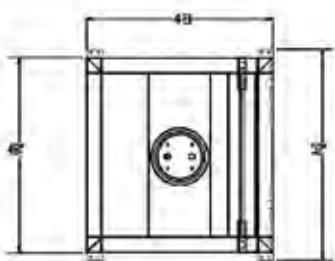


Stainless Steel Pneumatic Tilter

- 100% Stainless steel frame
- Available in 304L and 316L stainless steel
- Capacities 500 to 5,000 lbs
- Finishes 2B, electro polished and 35 RA
- Clean room compliant
- For Food, pharmaceutical, and other washdown applications
- Floor mounted or stand mounted
- cGMP Models available
- Custom designs
- UL and CE approved
- Air bag powered



Drawings



Options

- cGMP
- EE and EX rated trucks available
- Epoxy coatings, galvanized, nickel plated and linexcoatings available
- Rider platforms
- Horizontal travel models
- Straddle trucks, counterbalance fork over and walkie reach trucks are all available



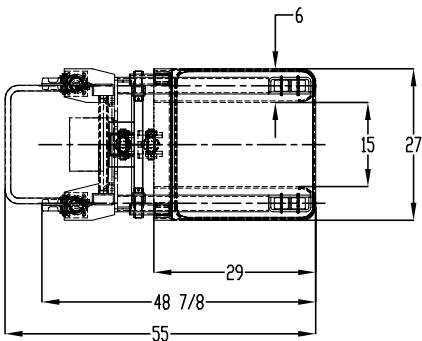
Stainless Steel Tilter & Straddle Tilter

Features

- 304L and 316L Stainless Steel or Epoxy finished
- Up to 90 degrees of tilt angle
- Straddle and fork over styles available
- 2,500 lbs and 4,000 lbs capacity
- Ergonomics height of 32" to bottom of tote 110 V and 24 V DC



Drawings



Technical Data

CAPACITY	3,000 lbs
CONSTRUCTION	Stainless Steel
LOWERED HEIGHT	6.5"
DUMP HEIGHT	34" to 48"
FORKS	6" wide x 25" long 15" between forks
POWER PACK	24 volt DC with hand controls
TILT ANGLE	85°
PAINT	White epoxy



Stainless Steel Ground Level Tilters

1,000/2,000/4,000 lbs

Features

TILT ANGLE

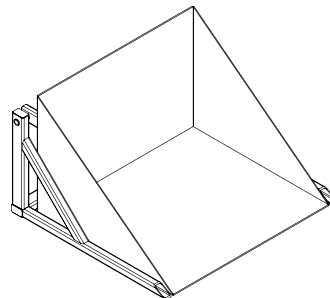
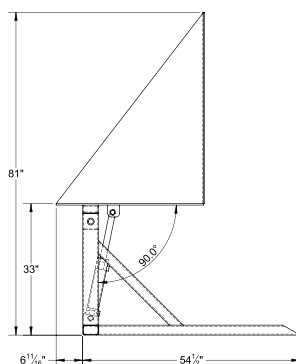
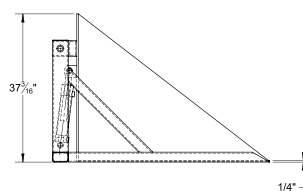
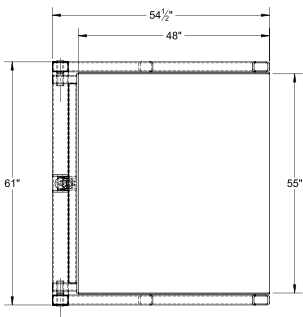
- Ground level loading with pallet truck up to 90 degree tilt angle at 33 inches

SAFETY

- 30 inch reach max in tilted position to end of back plate

POWER SUPPLIES

- Air/Hydraulic (standard)
Foot Pedal Standard (hand control optional)
- A/C 110/1/60 volt (standard)
Hand or foot control
- A/C 460/575/3/60 vol (optional) Hand or foot control



Options

- Photo Eyes
- Safety Skirts
- Increase/restrict tilt angle
- Full plated platform
- Increase/reduce platform size
- Semi-portable c/w dolly handle



Stainless Steel Pharm Assist

Features

- 304L or optional 316L stainless steel for your clean room applications
- Standard and custom sizes and custom end-effectors are available for your special applications
- A small foot print in 24 volt DC drive with lithium and sealed batteries that will provide shift after shift of lifting ease
- Available with manual or electric brake so that your load will stay where you place it
- Easy to use controls that are identical to a powered pallet truck so any experienced operator will find it easy to use.



manual model shown

Optional Attachments



Spindle



Double Spindle



Reel Rotator



V Block





Stainless Steel Pneumatic Lift Tables

Features

- Heavy Duty all welded frames
- Delrin bushings
- Life time guarantee on Firestone Airbags
- Low maintenance
- Easy operation



24" Lift

Model	Capacity lbs	Platform Sizes In.	Base Sizes In.	Lower Ht. In.	Raised Ht. In.	Motor Wt. Lb.
SLALT2 3648	2,000	36 x 48	36 x 48	10	32	750
SLALT2 4848	2,000	48 x 48	36 x 48	10	32	800
SLALT2 5648	2,000	56 x 48	36 x 48	10	32	870
SLALT2 6048	2,000	60 x 48	36 x 48	10	32	950
SLALT2 4848	4,000	48 x 48	48 x 48	10	32	1,000
SLALT2 5648	4,000	56 x 48	48 x 48	10	32	1,090
SLALT2 6048	4,000	60 x 48	48 x 48	10	32	1,190



Options

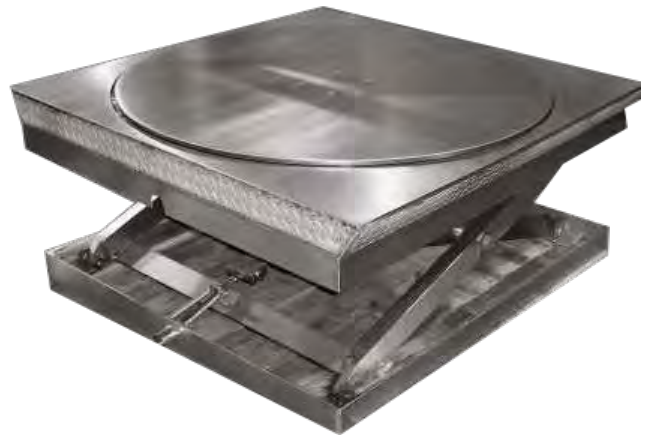
- Larger Capacities
- Turn Tables
- Safety Skirts
- Larger Platforms
- Ball Transfer
- Tandem Lifts
- Portable Units



Stainless Steel Low Profile Lift Tables

Features

- Heavy Duty all welded frames
- Delrin bushings
- Low collapsed height



30" Lift

Model	Capacity lbs	Platform Sizes In.	Lower Ht. In	Raised Ht. In.	Optional Ramp W-L	Shipping Wt. Lb.
SS SLLP 20	2,000	36 x 48	3.5	33	36 x 30	700
SS SLLP 40	4,000	36 x 48	4.5	33	36 x 30	800



Options

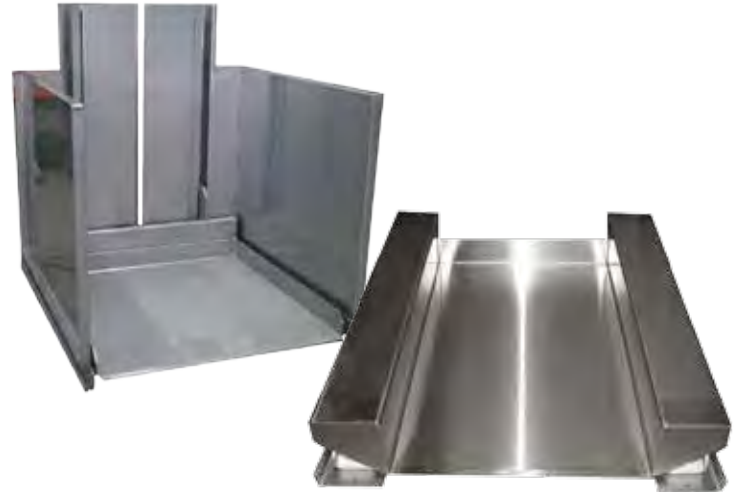
- Smaller and
- Larger Platforms
- Loading Ramps
- Turn Tables
- Ball Transfer
- Portable Units
- Safety Skirts



Stainless Steel Ground Level Scissor & Column Lifts

Features

- Life time no lubrication
- Velocity Fuses on all cylinders
- Reinforced Platforms
- Formed Platform
- Overload Protection with built in pressure relief valves
- Delrin rollers
- North American Components
- Washdown fully welded



32" Lift

Model	Capacity lbs	Platform Sizes In.	Base Sizes In.	Lower Ht. In.	Raised Ht. In.	Shipping Wt. Lb.
SS SLGL 32-20	2,000	44 x 48	63 x 54	3/8	32	1,400
SS SLGL 32-201	2,000	48 x 48	67 x 54	3/8	32	1,600
SS SLGL 32-40	4,000	42 x 48	63 x 54	1/2	32	1,410
SS SLGL 32-401	4,000	48 x 48	67 x 54	1/2	32	1,650
SS SLGL 32- 60	6,000	48 x 48	63 x 54	1/2	32	1,750
SS SLGL 32-601	6,000	48x 48	67 x 54	1/2	32	1,850
SS SLGL 32-80	8,000	48 x 48	72 x 54	1/2	32	2,300
SS SLGL 32-801	8,000	48 x 48	72 x 54	1/2	32	2,600

Options

- Conveyor
- Ball Transfer
- Photo Eyes
- Toe Guards
- Flow Through

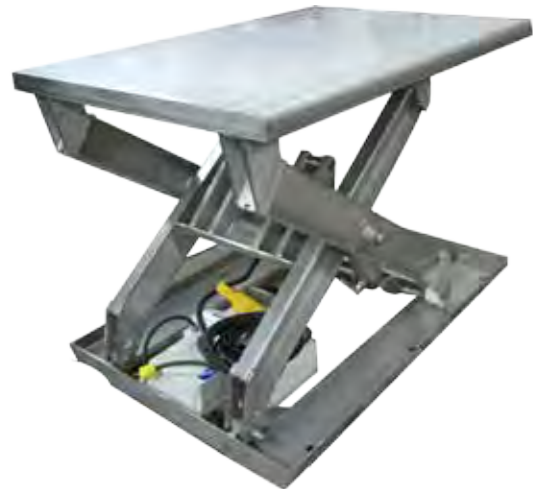
Ground Level 32" Scissor Lifts are also available in Galvanized and Epoxy Coated



Stainless Steel Ergonomic Lift Tables

Features

- Value priced 2,000 and 2,500 lbs capacity
- USDA and CGMP compliant
- North American 304L and 316L stainless steel
- Bolt together design eliminates cracks, crevices and pin holes where bacteria can form and reduced down time
- Sanitary design with full pan base and platform formed to eliminate welds
- Nickel plated or stainless cylinders
- Nema4x hand controls
- Standard finishes from 2B, electro polished and 35 RA



Options

- 36" and 40" lift heights
- Stainless hydraulic cylinders
- Sanitation package 6" adjustable legs to make floor around lift easier to clean
- Rotating platforms, tilting platforms
- Portable and semi portable
- Polished tig welds
- Safety railing with gates
- Photo eyes
- Air powered
- Self propelled
- Double and triple lifts
- Custom sizes
- Capacities from 500 to 10,000 lbs



Nickel Plated Cylinders



Bolt Together



Delrin Rollers and Bearings



Sanitation Package

30" Lift

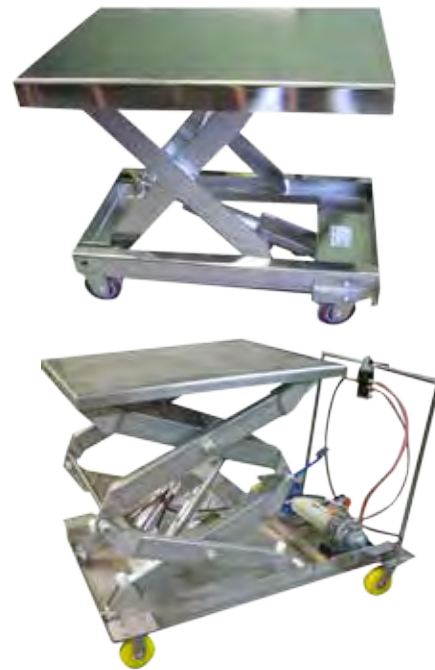
Model	Capacity lbs	Platform Sizes In.	Base Sizes In.	Lower Ht. In.	Raised Ht. In.	Motor HP	Motor Wt. Lb.
SL SS30-20	2,000	44 x 48	36 x 48	8	38	1	550
SL SS30-25	2,500	44 x 48	36 x 48	8	38	1	625
SL SS30-40	4,000	44 x 48	36 x 48	8	38	1.5	775
SL SS30-60	6,000	46 x 48	36 x 48	12	42	1.5	975
SL SS30-80	8,000	46 x 48	36 x 48	12	42	2	1,250



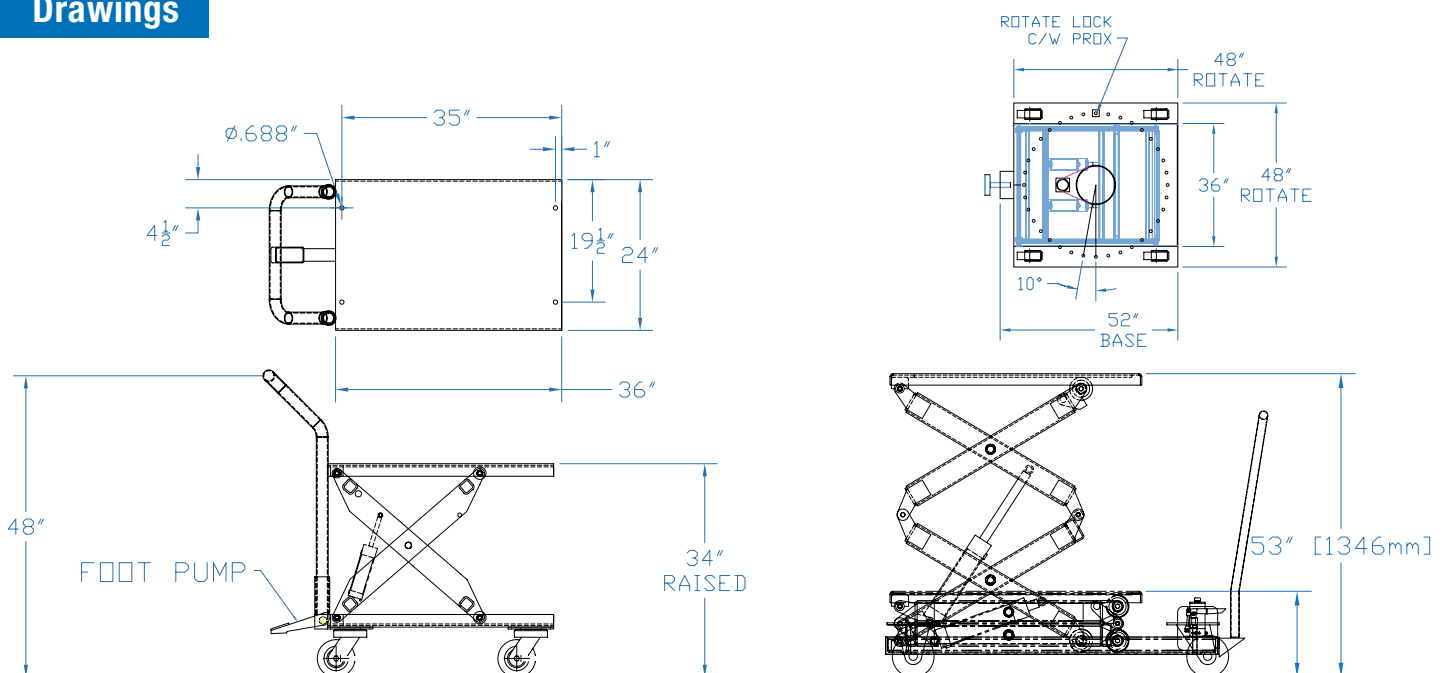
Stainless Steel Single & Double Table Portable Lift Tables

Features

- High quality 304L and 316L stainless steel
- Foot pump and powered lift available
- Delrin rollers and bushings
- Battery powered, air powered and A/C powered
- Platform sizes to 48" x 72" (1,200mm x 1,600 mm)
- Lift heights to 78" high
- Nickel plated and stainless and washdown pumps



Drawings





Stainless Steel Single & Double Table Portable Lift Tables

Foot Pump Models

Model	Capacity lbsP	Lowered lift	Raised height	Platform size	Option platform sizes to
SL SS34-05	500	16"	34"	24" x 36"	36" x 48"
SL SS34-10	1,000	16"	34"	24" x 36"	36" x 48"

Double Foot Pump Models

SL SSD54-05	500	18"	72"	24" x 36"	36" x 48"
SL SSD54-10	1,000	18"	72"	24" x 36"	36" x 48"

Powered Models

SL SSP34-05	500	16"	34"	24" x 36"	48" x 60"
SL SSP34-10	1,000	16"	34"	24" x 36"	48" x 60"
SL SSP34-15	1,500	16"	34"	24" x 36"	48" x 60"
SL SSP34-20	2,000	16"	34"	24" x 36"	48" x 60"

Double Powered Models

SL SSP60-05	500	18"	78"	36" x 48"	60" x 72"
SL SSP60-10	1,000	18"	78"	36" x 48"	60" x 72"
SL SSP60-15	1,500	18"	78"	36" x 48"	60" x 72"
SL SSP60-20	2,000	18"	78"	36" x 48"	60" x 72"
SL SSP60-30	3,000	18"	78"	36" x 48"	60" x 72"
SL SSP60-40	4,000	18"	78"	36" x 48"	60" x 72"



Stainless Steel Economy Lift Tables

Features

- High quality 304L and 316L stainless steel
- Conforms to En1570 and ANSI/ASME safety standard
- Capacities 150 kgs to 1,000 kgs
- Safety clearance between scissors to prevent from trapping
- Swivel wheel with protection frame and brake to prevent foot from injury
- Built-in relief valve to fulfill overload protection.
- For use in food and medicine industry



Technical data

MODEL	SL B SS50 - SINGLE SCISSOR	SL B SS100 - SINGLE SCISSOR
CAPACITY	500 kg 1,102 lb	1,000 kg 2,204 lb
MATERIAL	304 Stainless Steel	304 Stainless Steel
PLATFORM SIZE	828 mm x 498 mm 32.6" X 19.7"	1,010 mm x 520 mm 39.75" X 20.5"
LOWERED HEIGHT	330 mm 13"	444 mm 17.5"
RAISED HEIGHT	950 mm 37.4"	950 mm 37.4"



Stainless Steel Spring Actuated Level Loader

Features

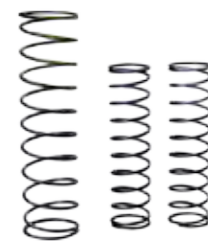
The best way to save workers backs.

- Automatically keeps pallet or stillage loads at an optimum working height when loading or unloading goods
- Dramatically reduces the effort required to palletise goods.
- Built-in turntable allows simple load rotation and access to all sides



Technical data

MODEL SPP360-2000		
CAPACITY	2,000 kg	4,500 lbs
PLATFORM DIAMETER	1,100 mm	43 ¾"
MINIMUM PLATFORM HEIGHT	230 mm	9"
MAXIMUM PLATFORM HEIGHT	706 mm	27¾"
BASE SIZE	915 x 934 mm	36" x 36¾"





Stainless Steel Self Adjusting Lift Tables

Features

- Solid formed platform and base frame eliminating cracks and crevices
- Bolt together designs eliminating pinholes in welds and potential holes where bacteria can hide
- Delrin rollers and delrin bushings and bearings eliminating rust from teflon bushings and steel bearings leaking into your process
- Optional sanitation package that keeps your lift off the floor, making it simpler to clean your facility
- Air eliminates springs that will rust and crack and eventually fail
- Self adjusting and operator adjusted designs for the best ergonomic options
- Explosion proof and custom designs to satisfy any lifting application



Bolt Together

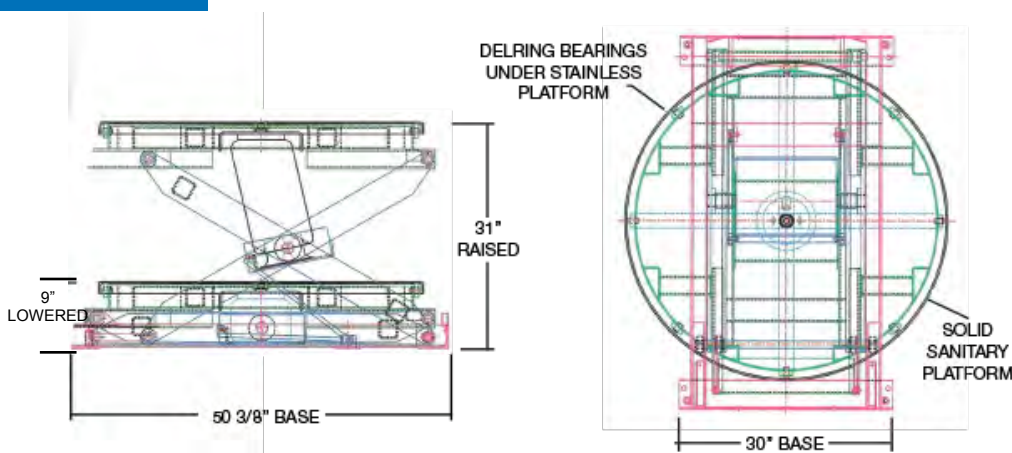


Delrin Rollers and Bearings



Sanitation Package

30" Lift



Options

- Self Adjusting
- Operator Adjusted
- Explosion Proof



Scissors Lift & Tilt

Features

- 12" high retaining back plate
- Remote powerpack
- Velocity fuses on all hydraulic cylinders
- Over load protection
- Reinforced platforms
- 1 year warranty

Options

- Self Adjusting
- Operator Adjusted
- Explosion Proof

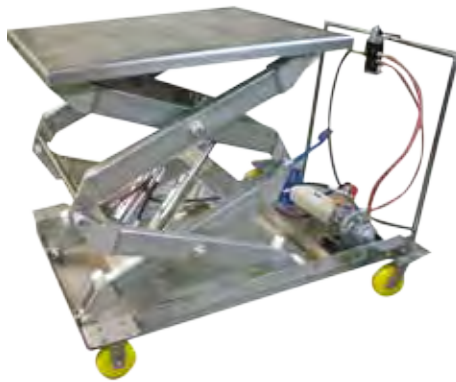




Stainless Steel Double Lift Tables

Features

- Capacities from 500 lbs to 10,000 lbs and lift heights to 144"
- Tube and non tube units available
- Delrin rollers and Delrin bushings
- 100% grade 8 bolts



60" Lift

Model	Capacity lbs	Platform Size	Base Size	Lower Height	Raised Height	Up Speed	Motor HP	Shipping Weight
DSL-SS-60-20	2,000	30" x 48"	30" x 48"	10"	70"	35 sec	1	1,800 lbs
DSL-SS-60-40	4,000	30" x 48"	30" x 48"	14"	74"	70 sec	1	1,800 lbs
DSL-SS-60-60	6,000	30" x 48"	30" x 48"	16"	76"	90 sec	1	1,900 lbs

72" Lift

Model	Capacity lbs	Platform Size	Base Size	Lower Height	Raised Height	Up Speed	Motor HP	Shipping Weight
DSL-SS-72-20	2,000	30" x 60"	30" x 60"	10"	82"	45 sec	1	2,000 lbs
DSL-SS-72-40	4,000	30" x 60"	30" x 60"	14"	86"	90 sec	1	2,100 lbs
DSL-SS-72-60	6,000	30" x 60"	30" x 60"	16"	88"	110 sec	1	2,200 lbs

- Options include rotators, railings and sanitation package



Stainless Steel Double Lift Tables

84" Lift

Model	Capacity lbs	Platform Size	Base Size	Lower Height	Raised Height	Up Speed	Motor HP	Shipping Weight
DSL-SS-96-20	2,000	48" x 84"	48" x 72"	10"	106"	60 sec	3	3,000 lbs
DSL-SS-96-40	4,000	48" x 84"	48" x 72"	14"	110"	70 sec	3	3,100 lbs
DSL-SS-96-60	6,000	48" x 84"	48" x 72"	16"	70"	60 sec	5	3,200 lbs

120" Lift

Model	Capacity lbs	Platform Size	Base Size	Lower Height	Raised Height	Up Speed	Motor HP	Shipping Weight
DSL-SS-120-20	2,000	48" x 96"	48" x 96"	14"	134"	30 sec	5	3,000 lbs
DSL-SS-120-40	4,000	48" x 96"	48" x 96"	14"	134"	35 sec	5	3,200 lbs
DSL-SS-120-60	6,000	48" x 96"	48" x 96"	16"	134"	35 sec	5	3,800 lbs

144" Lift

Model	Capacity lbs	Platform Size	Base Size	Lower Height	Raised Height	Up Speed	Motor HP	Shipping Weight
DSL-SS-144-20	2,000	54" x 108"	54" x 108"	16"	160"	60 sec	5	3,200 lbs
DSL-SS-144-40	4,000	54" x 108"	54" x 108"	16"	160"	60 sec	5	3,400 lbs
DSL-SS-144-60	6,000	54" x 108"	54" x 108"	18"	162"	60 sec	5	3,550 lbs

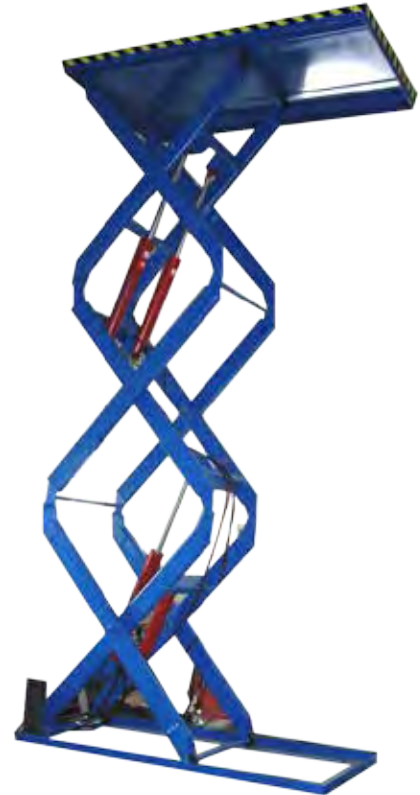
- Options include rotators, railings and sanitation package



Stainless Steel Triple Lift Tables

Features

- Raise up to 10,000 lbs of men and material to heights of 35 feet
- Fits heavy loads in small footprint and will go where no other heavy equipment can travel
- Meets ANSI standards for Stationary manlifts or as mezzanine lifts for your facility
- Quad lifts as well as stainless steel models for clean rooms.



72" Lift

Model	Capacity lbs	Platform Size	Base Size	Lowered Height	Raised Height
TSL 72-30	3,000	36" x 42"	36" x 42"	15"	87"
TSL 72-60	6,000	36" x 42"	36" x 42"	18"	90"
TSL 72-100	10,000	36" x 72"	36" x 72"	24"	96"

96" Lift

Model	Capacity lbs	Platform Size	Base Size	Lowered Height	Raised Height
TSL 96-30	3,000	36" x 48"	36" x 48"	15"	87"
TSL 96-60	6,000	36" x 48"	36" x 48"	18"	90"
TSL 96-100	10,000	36" x 72"	36" x 72"	24"	120"



Stainless Steel Triple Lift Tables

120" Lift

Model	Capacity lbs	Platform Size	Base Size	Lowered Height	Raised Height
TSL 120-30	3,000	36" x 60"	36" x 60"	15"	87"
TSL 120-60	6,000	36" x 60"	36" x 60"	18"	90"
TSL 120-100	10,000	36" x 72"	36" x 72"	24"	144"

144" Lift

Model	Capacity lbs	Platform Size	Base Size	Lowered Height	Raised Height
TSL 144-30	3,000	48" x 72"	48" x 72"	20"	164"
TSL 144-60	6,000	48" x 72"	48" x 72"	22"	166"
TSL 144-100		48" x 72"	48" x 72"	24"	168"

180" Lift

Model	Capacity lbs	Platform Size	Base Size	Lowered Height	Raised Height
TSL 180-30	3,000	60" x 96	60" x 96"	24"	204"
TSL 180-60	6,000	60" x 96	60" x 96"	30"	210"
TSL 180-100	10,000	60" x 96	60" x 96"	30"	210"

216" Lift

Model	Capacity lbs	Platform Size	Base Size	Lowered Height	Raised Height
TSL 216-30	3,000	60" x 120"	60" x 120"	30"	246"
TSL 216-60	6,000	60" x 120"	60" x 120"	40"	246"
TSL 216-100	10,000	60" x 120"	60" x 120"	40"	256"



Stainless Steel Custom Manual Pallet Truck

Features

- 304L and 316L Stainless Steel
- Up to 4,000 lb capacity
- Wider forks to 36" wide
- Longer forks to 96" long
- Narrow or wider forks
- North American Stainless





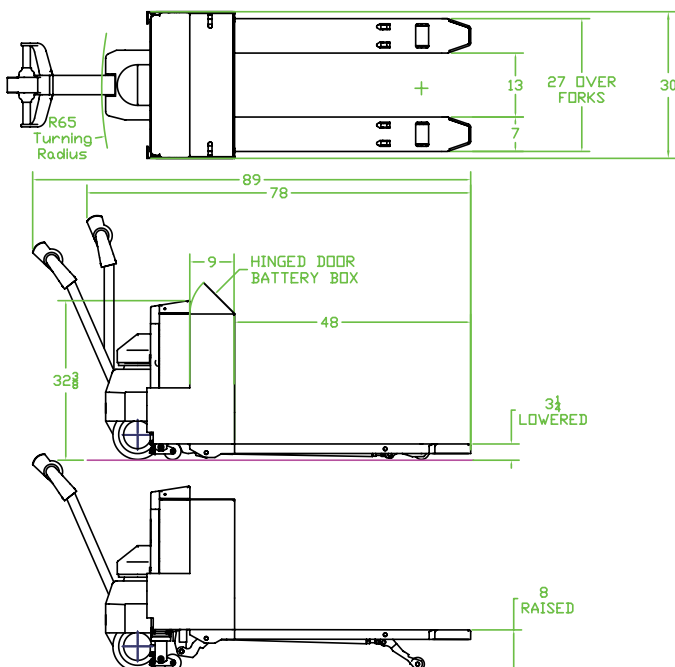
Stainless Steel Powered Pallet Trucks

Features

- 100% Stainless steel frame carriage, forks and undercarriage
- Available in 304L and 316L stainless steel
- Capacities 500 to 10,000
- Finishes 2B, electro polished and 35 RA
- Clean room compliant
- For Food, pharmaceutical, chemical and other demanding application
- Custom fork for lengths and widths
- cGMP Models available
- 24 Volt E and EE ratings galvanized, powder coated and epoxy steel it painted models available



Drawings



Options

- Stainless steel Platform trucks to 6,000 capacity
- Available in lift heights to 36"
- Custom sizes



Stainless Steel Push Stacker

Features

- 100% Stainless steel frame carriage, forks and undercarriage
- Available in 304L and 316L stainless steel
- Capacities 500 to 2,500 lbs
- Finishes 2B, electro polished and 35 RA
- Clean room compliant
- For Food, pharmaceutical,
- Custom fork sizes
- cGMP Models available
- Lift heights to 189 inches
- Custom designs
- UL and CE approved chemical and other washdown applications
- EE an Ex versions available



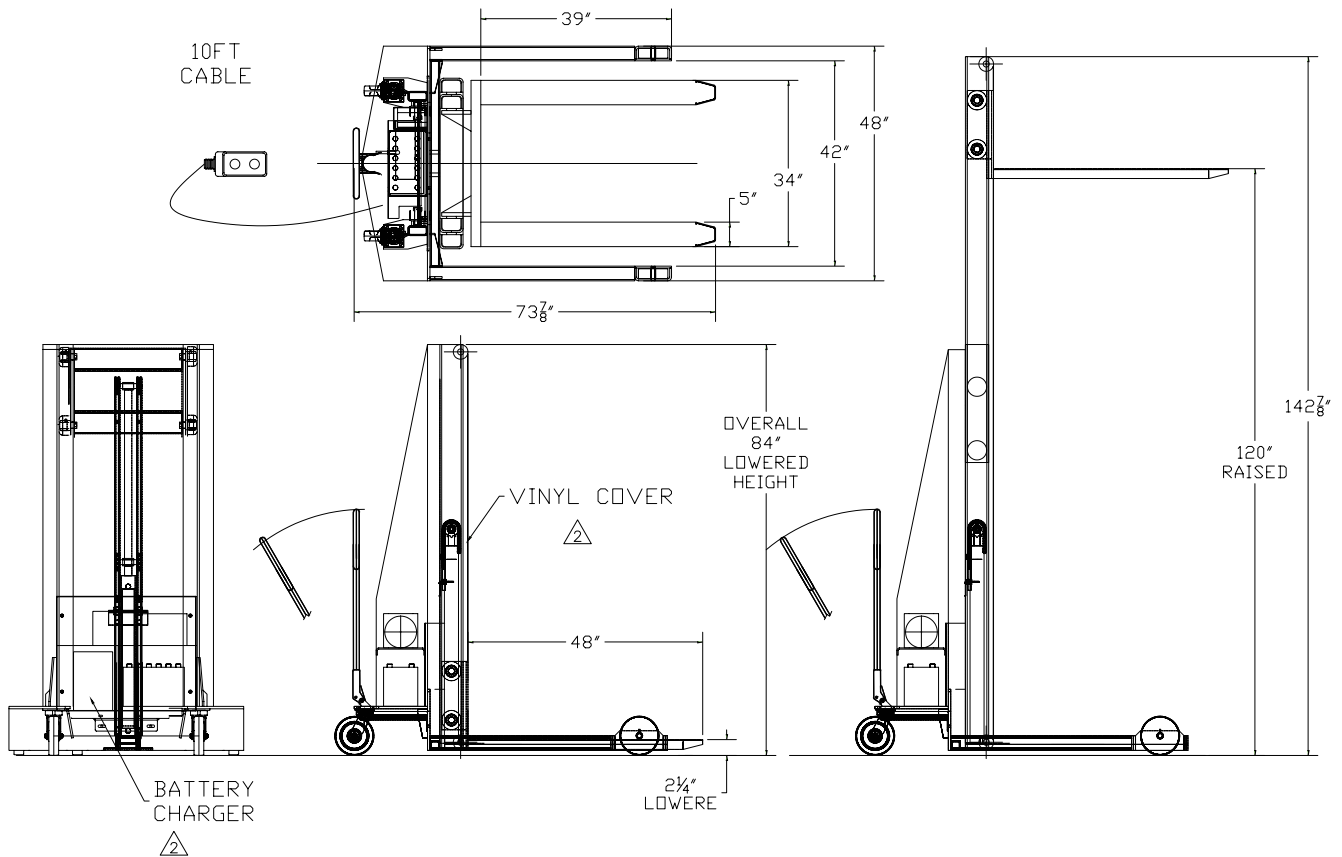
Technical data

Model	Capacity	Voltage	Heights	Forks
SL SS WFO 10	1,000	24 V	20 -120	
SL SS WFO 20	2,000	24 V	20 -120	36"-72" long
SL SS WFO 25	2,500	24 V	20 -120	non adjustable
SL SS WFO 30	3,000	24 V	20 -120	



Stainless Steel Push Stacker

Drawings





Stainless Steel Straddle Stacker

Features

- 100% Stainless steel frame carriage, forks and undercarriage
- Available in 304L and 316L stainless steel
- Capacities 500 to 5,000 lbs
- Finishes 2B, electro polished and 35 RA
- Clean room compliant
- For Food, pharmaceutical, chemical and other washdown applications
- Custom fork sizes
- cGMP Models available
- Lift heights to 189 inches
- Custom designs
- EE EX rated available
- UL and CE approved



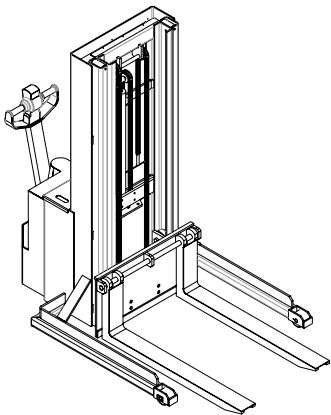
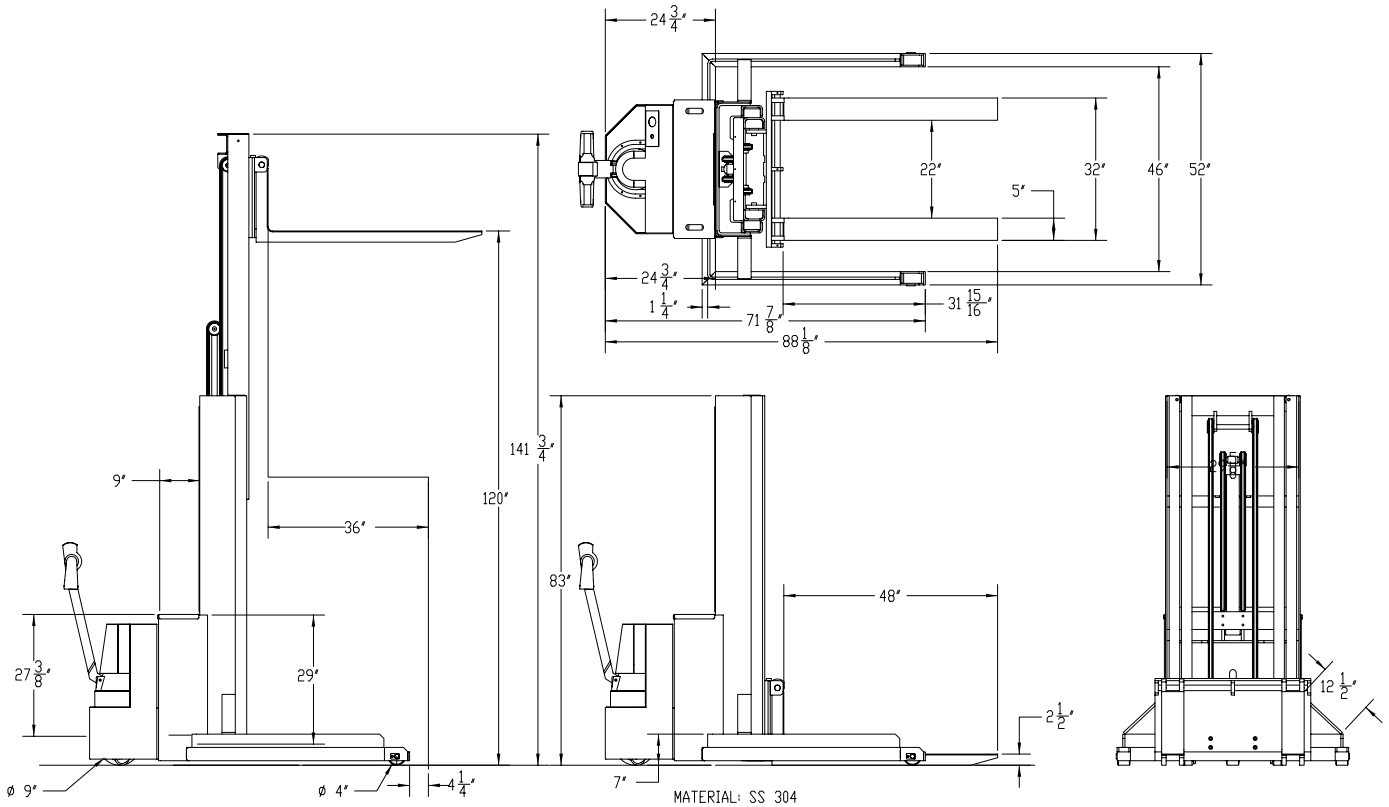
Technical data

Model	Capacity	Voltage	Heights	Outrigger
SL SS SS 10	1,000	24 V AC	36" x 154"	34" x 54"
SL SS SS 20	2,000	24 V AC	36" x 154"	34" x 54"
SL SS SS 25	2,500	24 V AC	36" x 154"	34" x 54"
SL SS SS 30	3,000	24 V AC	36" x 154"	34" x 54"



Stainless Steel Straddle Stacker

Drawings



Options

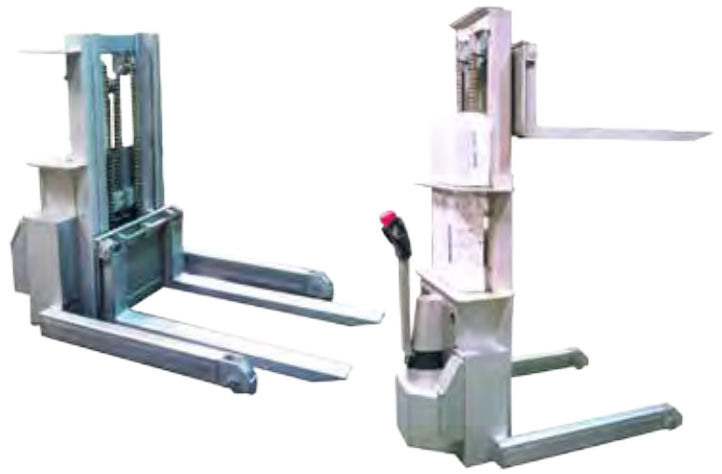
- cGMP
- EE and EX rated trucks available
- Epoxy coatings, galvanized, nickel plated and linex coatings available
- Rider platforms
- Horizontal travel models
- Straddle trucks, counterbalance fork over and walkie reach trucks are all available



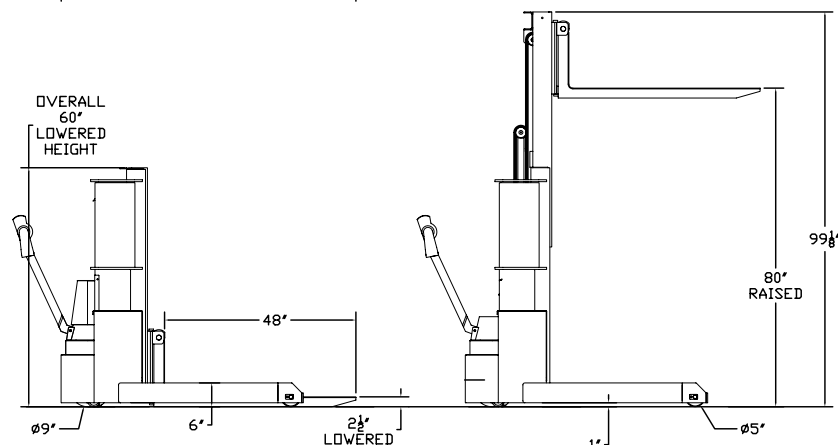
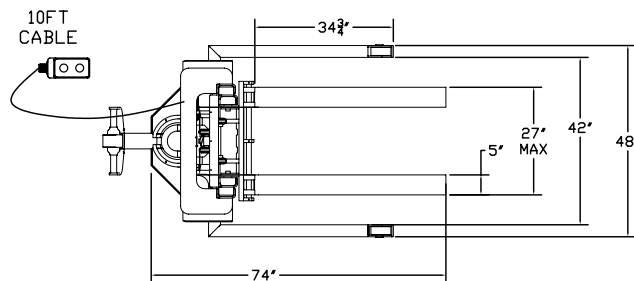
Stainless Steel Tight Turning Ratio Stacker

Features

- Heavy capacity for lifting IBC's and other ingredients pallets with the smallest footprint available.
- 3,000 lbs capacity
- Built in charger
- 304L and 316L stainless
- 83" lowered mast height with lift height to 144"
- Single, double and triple mast



Drawings





Stainless Steel Counterbalance Stacker

- 100% Stainless steel frame carriage, forks and undercarriage
- Available in 304L and 316L stainless steel
- Capacities 500 to 5,000 lbs
- Finishes 2B, electro polished and 35 RA
- Clean room compliant
- For Food, pharmaceutical, chemical and other washdown applications
- Custom fork sizes
- cGMP Models available
- Lift heights to 189 inches
- Custom designs



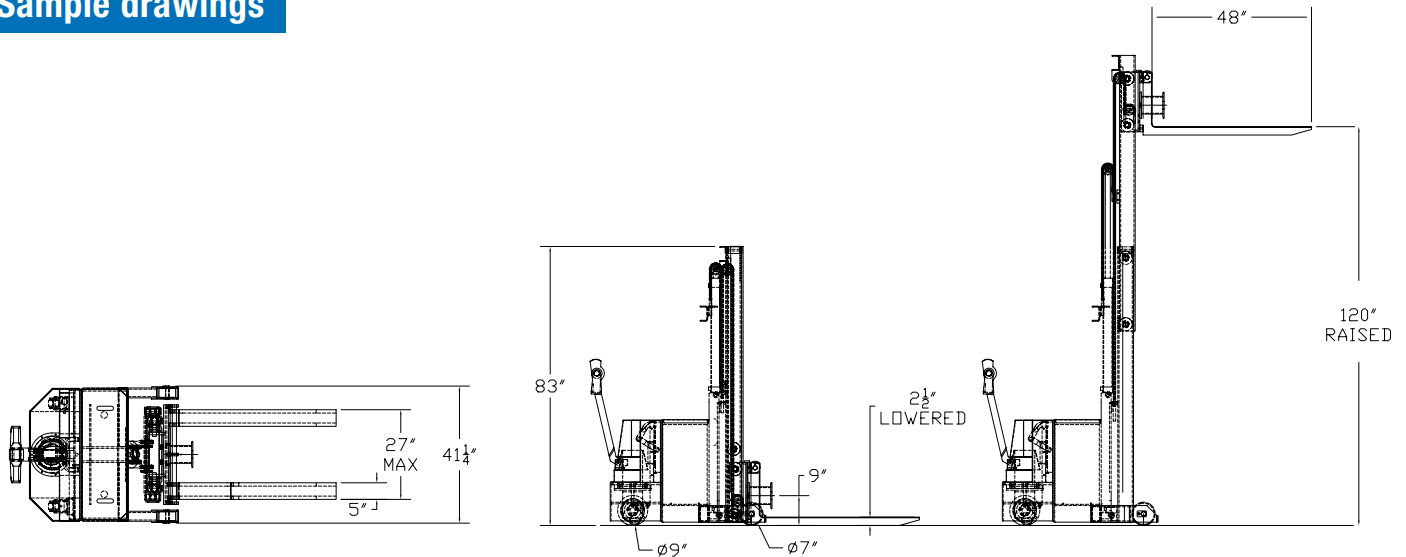
Technical data

Model	Capacity	Voltage	Heights	Forks
SL SS WCB 10	1,000	24 V	36" x 154"	
SL SS WCB 20	2,000	24 V	36" x 154"	36"-72" long
SL SS WCB 25	2,500	24 V	36" x 154"	12"-48" wide
SL SS WCB 30	3,000	24 V	36" x 154"	



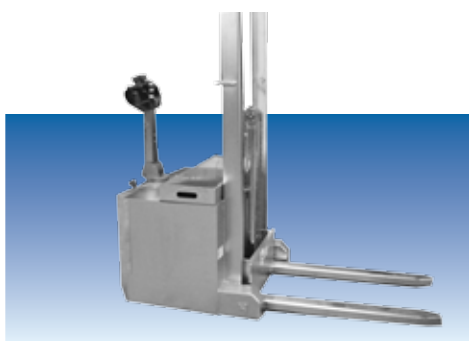
Stainless Steel Counterbalance Stacker

Sample drawings



Options

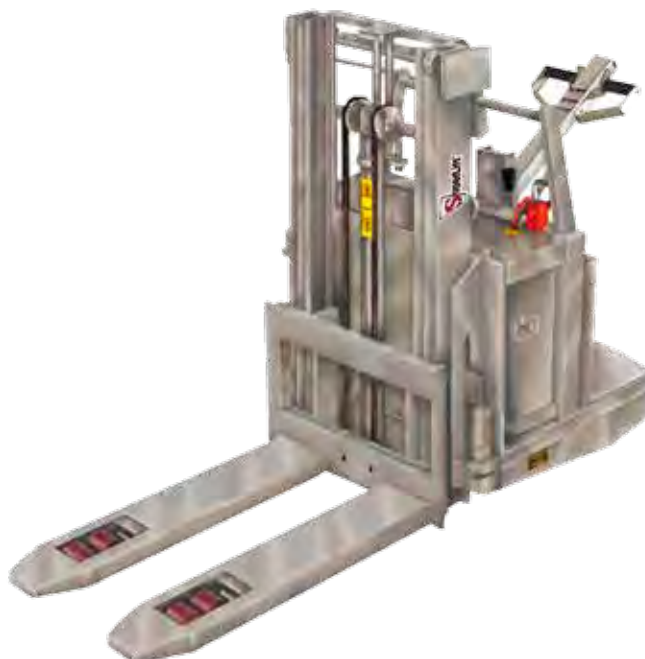
- cGMP
- EE and EX rated trucks available
- Epoxy coatings, galvanized, nickel plated and linex coatings available
- Rider platforms
- Horizontal travel models
- Straddle trucks, counterbalance fork over and walkie reach trucks are all available





Stainless Steel Walkie Fork Over Stacker

- 100% Stainless steel frame carriage, forks and undercarriage
- Available in 304L and 316L stainless steel
- Capacities 500 to 5,000 lbs
- Finishes 2B, electro polished and 35 RA
- Clean room compliant
- For Food, pharmaceutical, chemical and other washdown applications
- Custom fork sizes
- cGMP Models available
- Lift heights to 189 inches
- Custom designs
- UL and CE approved



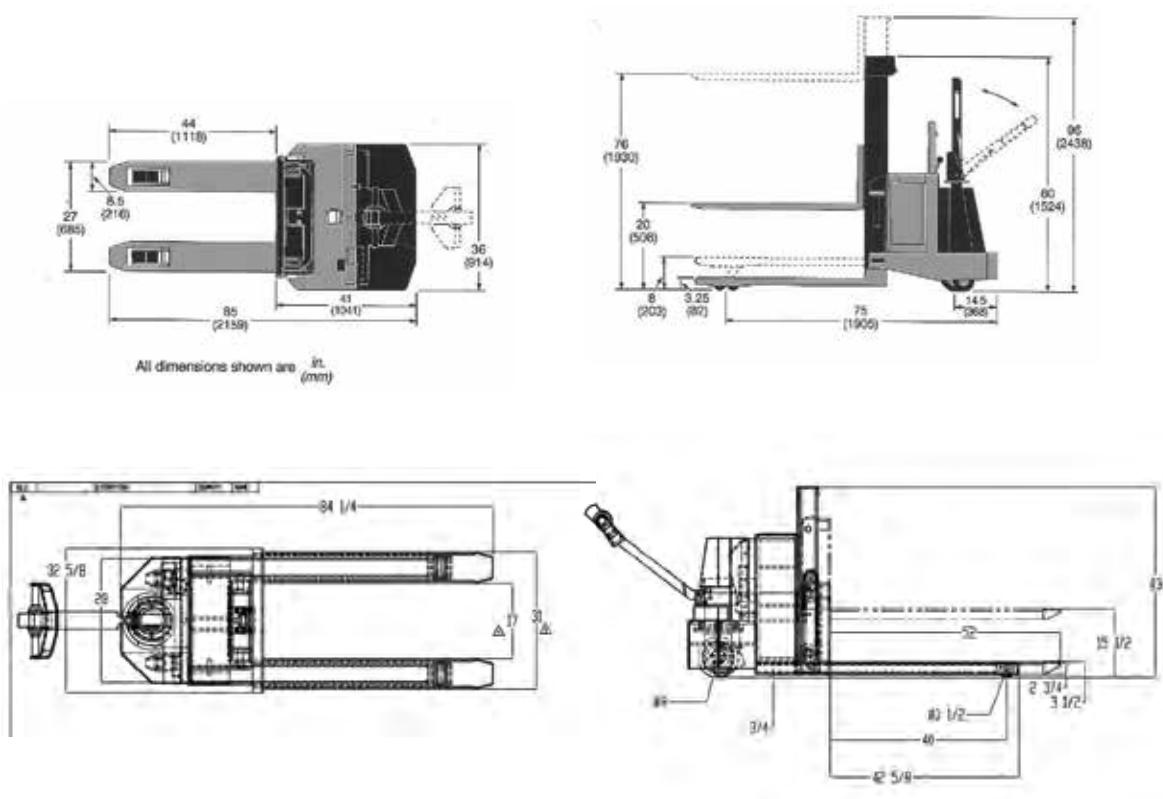
Technical data

Model	Capacity	Voltage	Heights	Forks
SL SS WFO10	1,000	24 V AC	20 - 120	
SL SS WFO 20	2,000	24 V AC	20 - 120	36"-72" long
SL SS WFO 25	2,500	24 V AC	20 - 120	non adjustable
SL SS WFO 30	3,000	24 V AC	20 - 120	



Stainless Steel Walkie Fork Over Stacker

Sample drawings



Options

- cGMP
- EE and EX rated trucks available
- Epoxy coatings, galvanized, nickel plated and linex coatings available
- Rider platforms
- Horizontal travel models
- Straddle trucks, counterbalance fork over and walkie reach trucks are all available



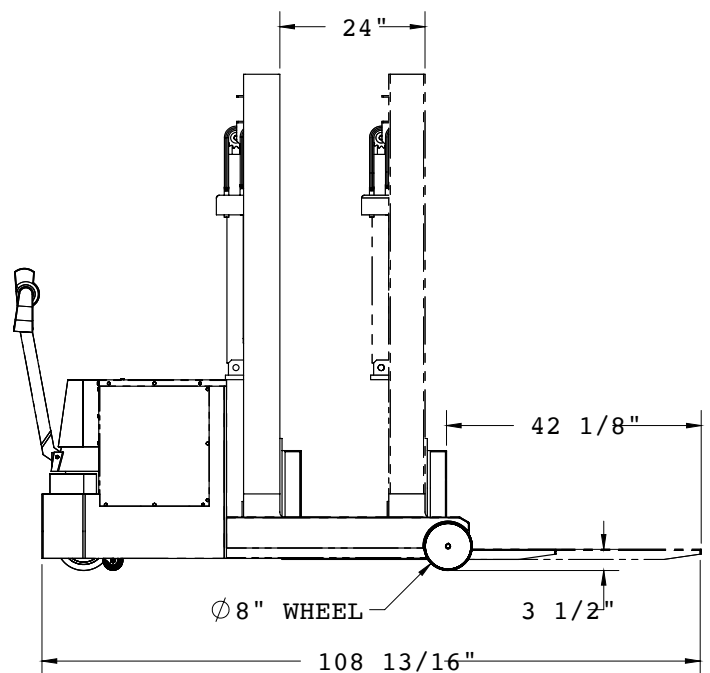
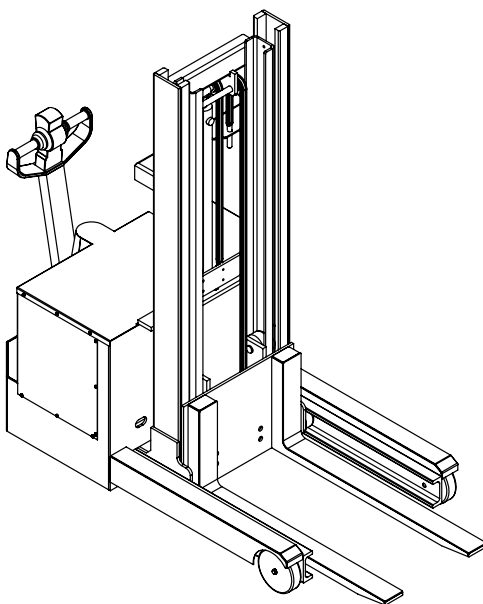
Stainless Steel Walk Behind Reach Truck

Features

- Movable Mast European Style
- Pantogram Scissor Style from North America
- 1,000 to 3,000 lbs capacity
- A/C Drives
- 304L or 316L Stainless Steel
- T.G. Welded Fully Welded



Drawings

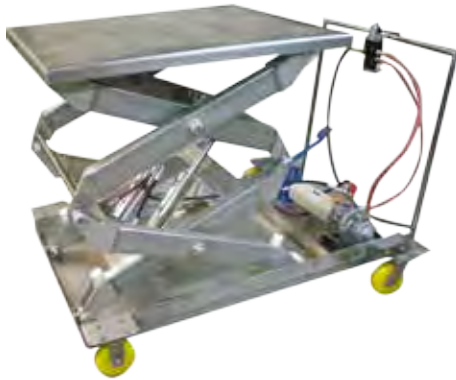




Stainless Steel Manlifts

Features

- Capacities from 500 lbs to 10,000 lbs and lift heights to 144"
- Tube and non tube units available
- Delrin rollers and Delrin bushings
- 100% grade 8 bolts



60" Lift

Model	Capacity lbs	Platform Size	Base Size	Lower Height	Raised Height	Up Speed	Motor HP	Shipping Weight
DSL-SS-60-20	2,000	30" x 48"	30" x 48"	10"	70"	35 sec	1	1,800 lbs
DSL-SS-60-40	4,000	30" x 48"	30" x 48"	14"	74"	70 sec	1	1,800 lbs
DSL-SS-60-60	6,000	30" x 48"	30" x 48"	16"	76"	90 sec	1	1,900 lbs

72" Lift

Model	Capacity lbs	Platform Size	Base Size	Lower Height	Raised Height	Up Speed	Motor HP	Shipping Weight
DSL-SS-72-20	2,000	30" x 60"	30" x 60"	10"	82"	45 sec	1	2,000 lbs
DSL-SS-72-40	4,000	30" x 60"	30" x 60"	14"	86"	90 sec	1	2,100 lbs
DSL-SS-72-60	6,000	30" x 60"	30" x 60"	16"	88"	110 sec	1	2,200 lbs

- Options include rotators, railings and sanitation package



Stainless Steel Manlifts

84" Lift

Model	Capacity lbs	Platform Size	Base Size	Lower Height	Raised Height	Up Speed	Motor HP	Shipping Weight
DSL-SS-96-20	2,000	48" x 84"	48" x 72"	10"	106"	60 sec	3	3,000 lbs
DSL-SS-96-40	4,000	48" x 84"	48" x 72"	14"	110"	70 sec	3	3,100 lbs
DSL-SS-96-60	6,000	48" x 84"	48" x 72"	16"	70"	60 sec	5	3,200 lbs

120" Lift

Model	Capacity lbs	Platform Size	Base Size	Lower Height	Raised Height	Up Speed	Motor HP	Shipping Weight
DSL-SS-120-20	2,000	48" x 96"	48" x 96"	14"	134"	30 sec	5	3,000 lbs
DSL-SS-120-40	4,000	48" x 96"	48" x 96"	14"	134"	35 sec	5	3,200 lbs
DSL-SS-120-60	6,000	48" x 96"	48" x 96"	16"	134"	35 sec	5	3,800 lbs

144" Lift

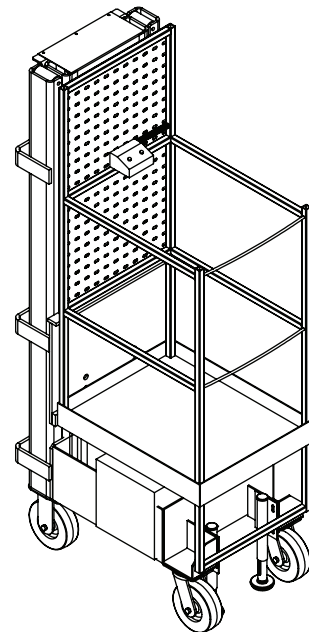
Model	Capacity lbs	Platform Size	Base Size	Lower Height	Raised Height	Up Speed	Motor HP	Shipping Weight
DSL-SS-144-20	2,000	54" x 108"	54" x 108"	16"	160"	60 sec	5	3,200 lbs
DSL-SS-144-40	4,000	54" x 108"	54" x 108"	16"	160"	60 sec	5	3,400 lbs
DSL-SS-144-60	6,000	54" x 108"	54" x 108"	18"	162"	60 sec	5	3,550 lbs



Stainless Steel Air Powered Manlift

Features

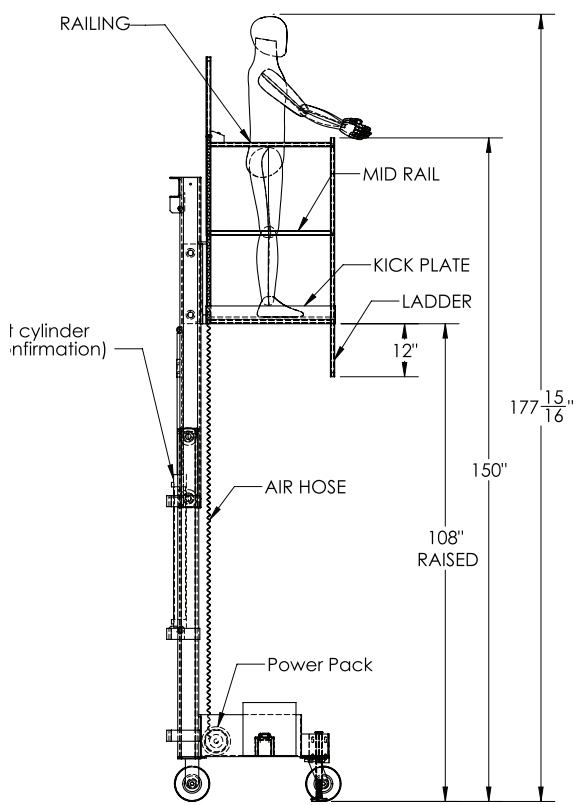
- Operates in factory air
- Fast operating time
- Single and two person models
- Slip not flooring
- 100% stainless steel
- Various layout and heights available
- Spark proof





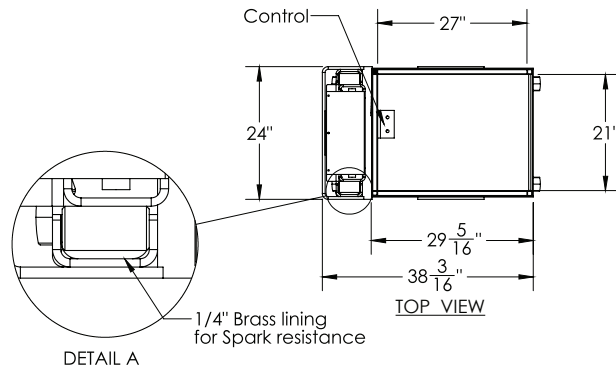
Stainless Steel Air Powered Manlift

Drawings

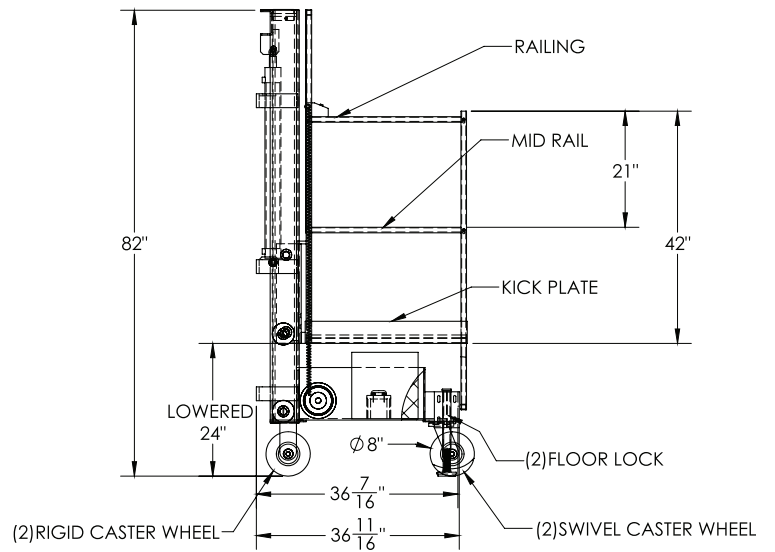


FRONT VIEW
RAISED POSITION

MATERIAL: SS 304



TOP VIEW



FRONT VIEW
CLOSED / RETRACTED POSITION

WEIGHT: - lbs
HARDNESS: -

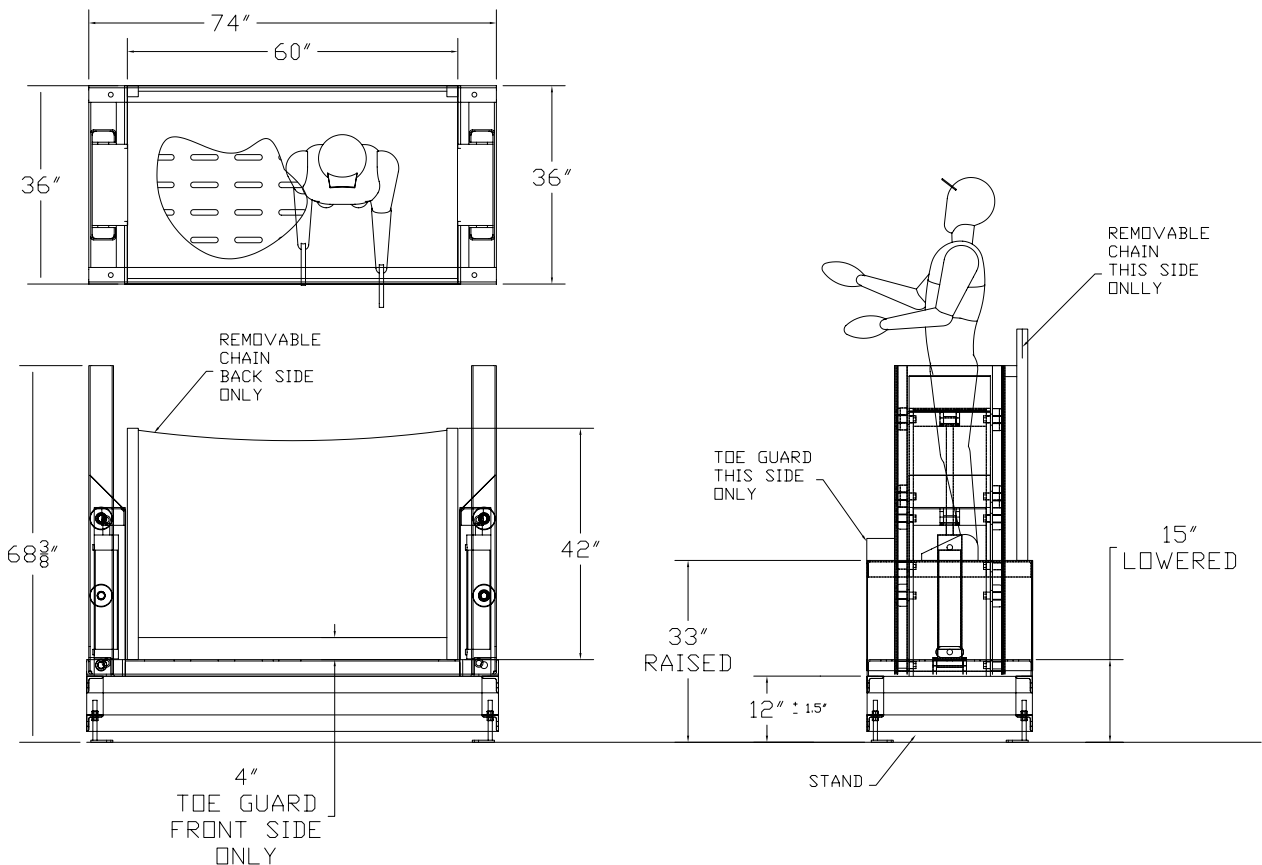


Stainless Steel Air Powered Work Positioner

Features

- Operates in factory air
- Fast operating time
- Single and two person models
- Slip not flooring
- 100% stainless steel
- Various layout and heights available
- Can be mounted on any stand

Drawings





Stainless Steel Work Positioner

Features

- SUS304 material, good for corrosive acids application
- Ideal for use in narrow aisles and confined spaces
- Perfect for all applications from pharmaceutical to catering, from packing line to food processing, from warehouse to office, kitchens, laboratories, retail outlet
- Operated via a manual hand winch
- Auto brake system prevents uncontrolled lowering
- With standard PE platform, stainless steel platform as option
- Quick change attachment options available



With stainless steel platform



With stainless steel V Plate

Technical data

MODEL:	M100S	M200S
TYPE:	Manual	Manual
CAPACITY:	100kg 220lbs	200kg 440lbs
LOAD CENTRE:	235mm 9.2"	235mm 9.2"
MIN. HEIGHT:	1500mm 59"	1500mm 59"
MAX. HEIGHT:	130mm 5.2"	130mm 5.2"
PLATFORM SIZE:	470mm x 600mm 18.5" x 23.6"	470mm x 600mm 18.5" x 23.6"
LOAD WHEEL:	ø75 2.9"	ø75 2.9"
STEERING WHEEL:	ø125 4.2"	ø125 4.2"
NET WEIGHT:	50kg 110lbs	60kg 132lbs



Stainless Steel Column & Mezzanine Lifts

Features

- 304L and 316L stainless steel
- Ground level loading
- Front and side loading models
- Lift heights 2 to 240 inches
- Sanitary design reduces cleaning time
- Capacities from 500 lbs to 6,000 lbs
- Operator controlled and automated models
- Meets ANSI standards, TSSA standards available
- cGMP and USDA



Options

- Standard and polished finishes
- Clean room compliant
- Epoxy coated and galvanized available
- Painted mild steel also available
- Stainless steel enclosures and mezzanines are available

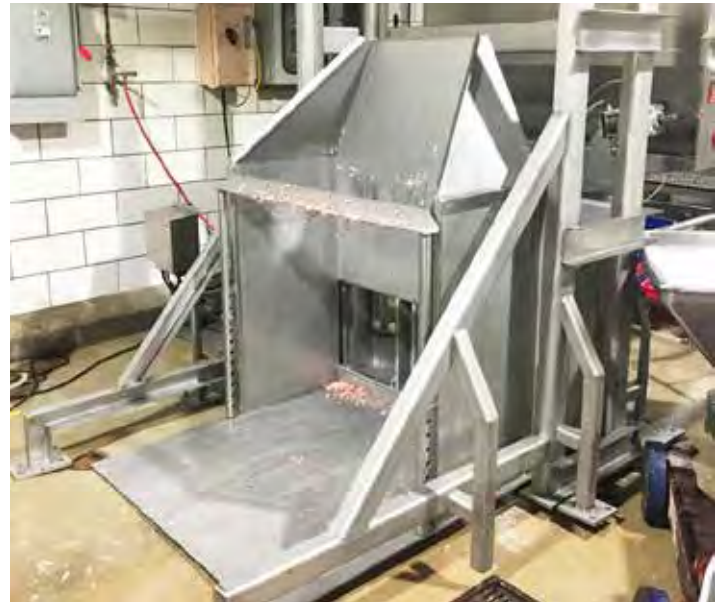
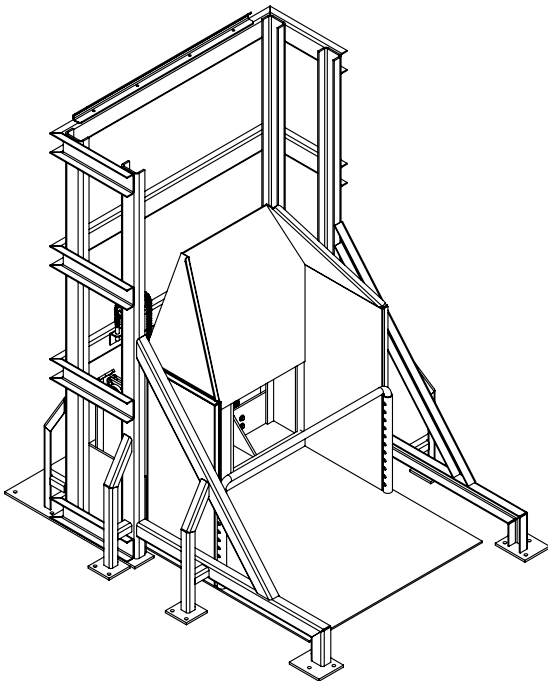


The Eliminator

Eliminates the possibility of listeria or bacteria
Faster cleaning time

Features

- 500 lbs to 3,500 lbs capacity
- No tube or enclosed material
- 30L4 or 316L stainless steel
- Dump angle to 135°
- Up to 10 feet dump heights
- Ground level loading



Saves time, save money



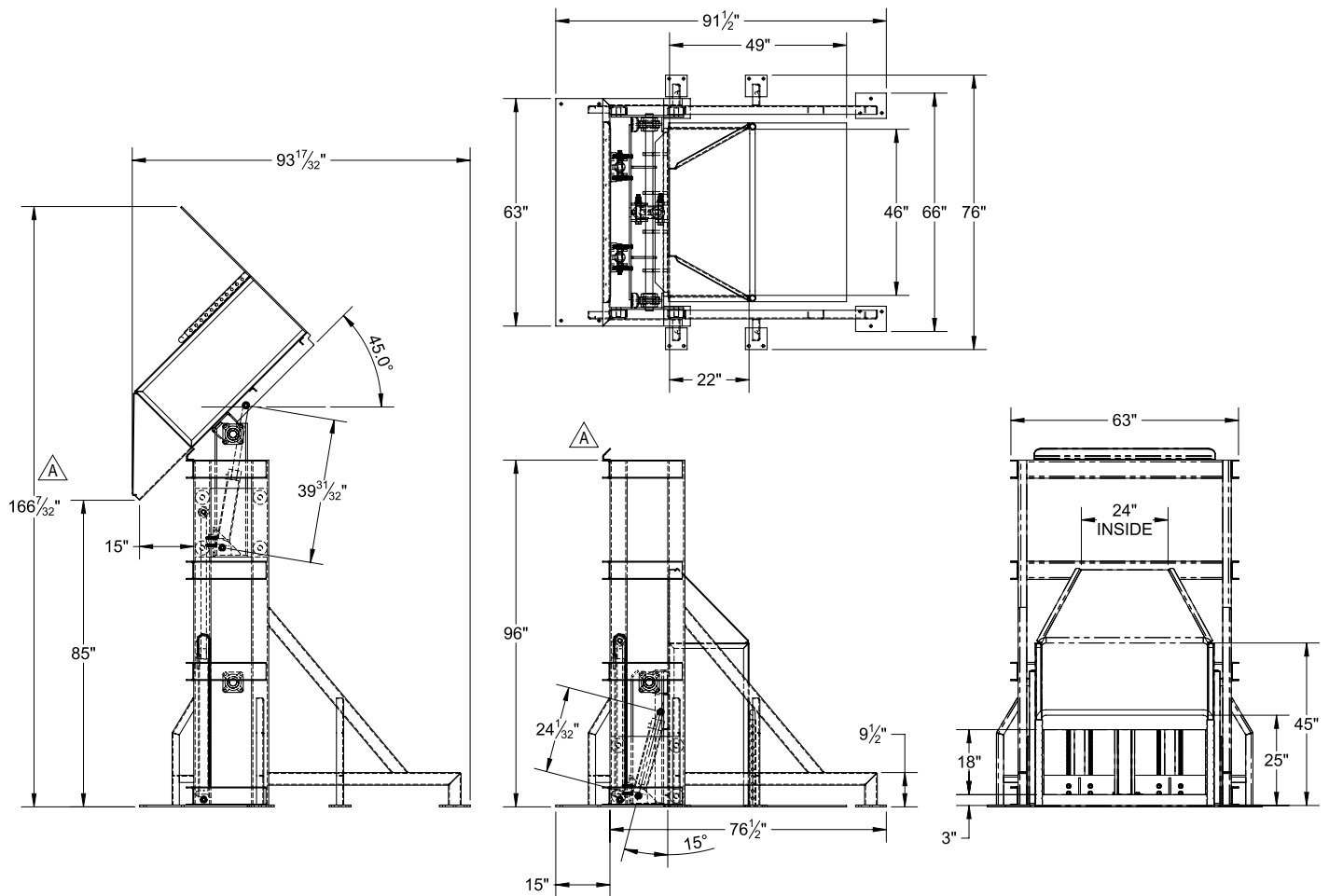
The cleanest dumpers in the industry



The Eliminator

Eliminates the possibility of listeria or bacteria
Faster cleaning time

Sample Drawings from 36" to 120" dump height



The cleanest dumpers in the industry



Stainless Steel Stationary & Portable Ingredient Lifts

Features

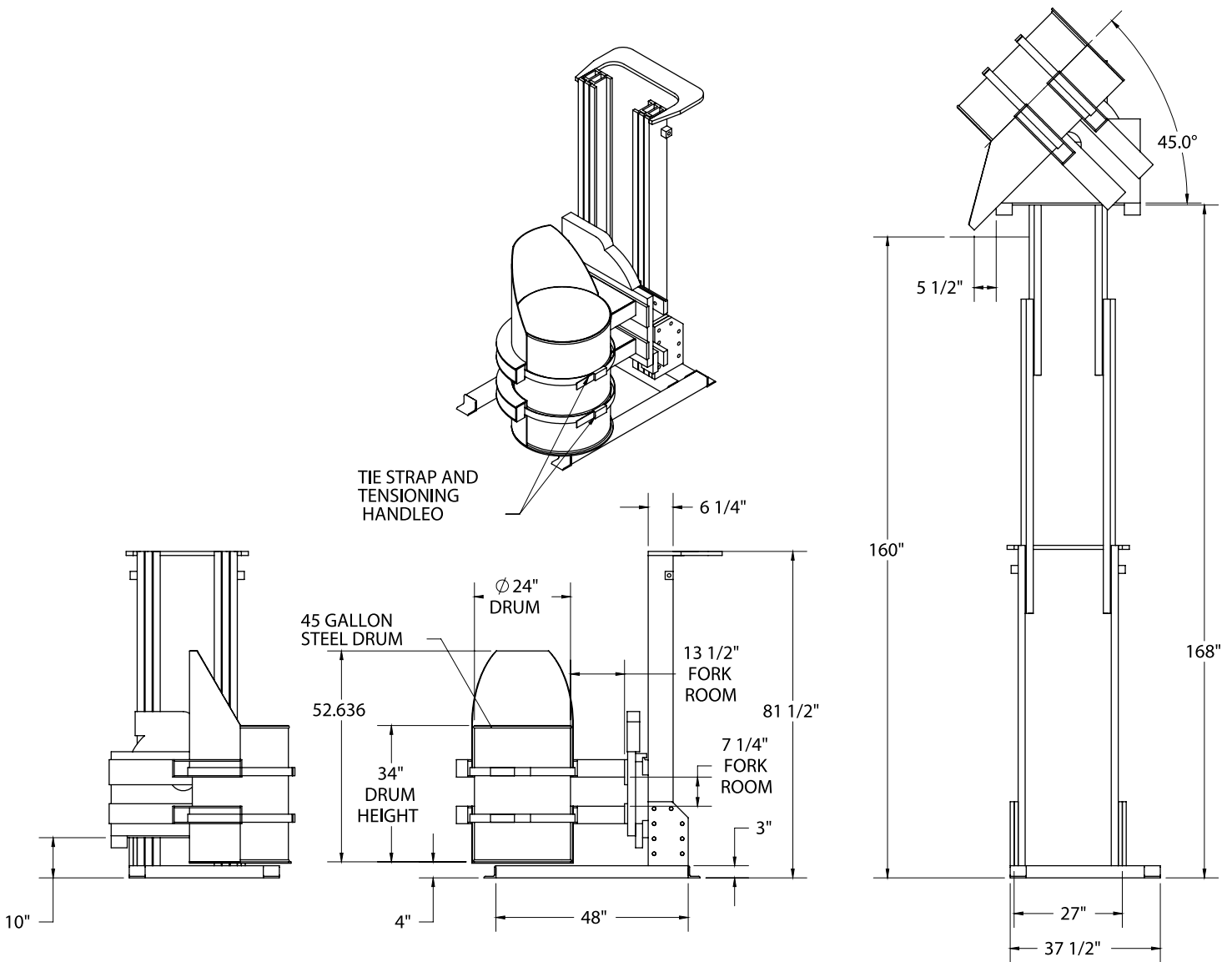
- Capacities from 100 lbs to 750 lbs
- Lift heights to 96"
- Standard and custom solutions
- Ergonomic lift and dump your ingredients into your process that will eliminate injuries
- Barrels, bags and boxes to 96"
- Stainless steel in 304L and 316L
- Epoxy coated with stainless ingredients containers
- Enamel painted units
- Dump angle to 45 degrees
- Some stationary units do not have to be lagged to the floor
- Available in Air, electric and Hydraulic models





Stainless Steel Stationary & Portable Ingredient Lifts

Drawings





Heavy Duty Stationary & Portable Ingredient Lifts & Dumpers

Features

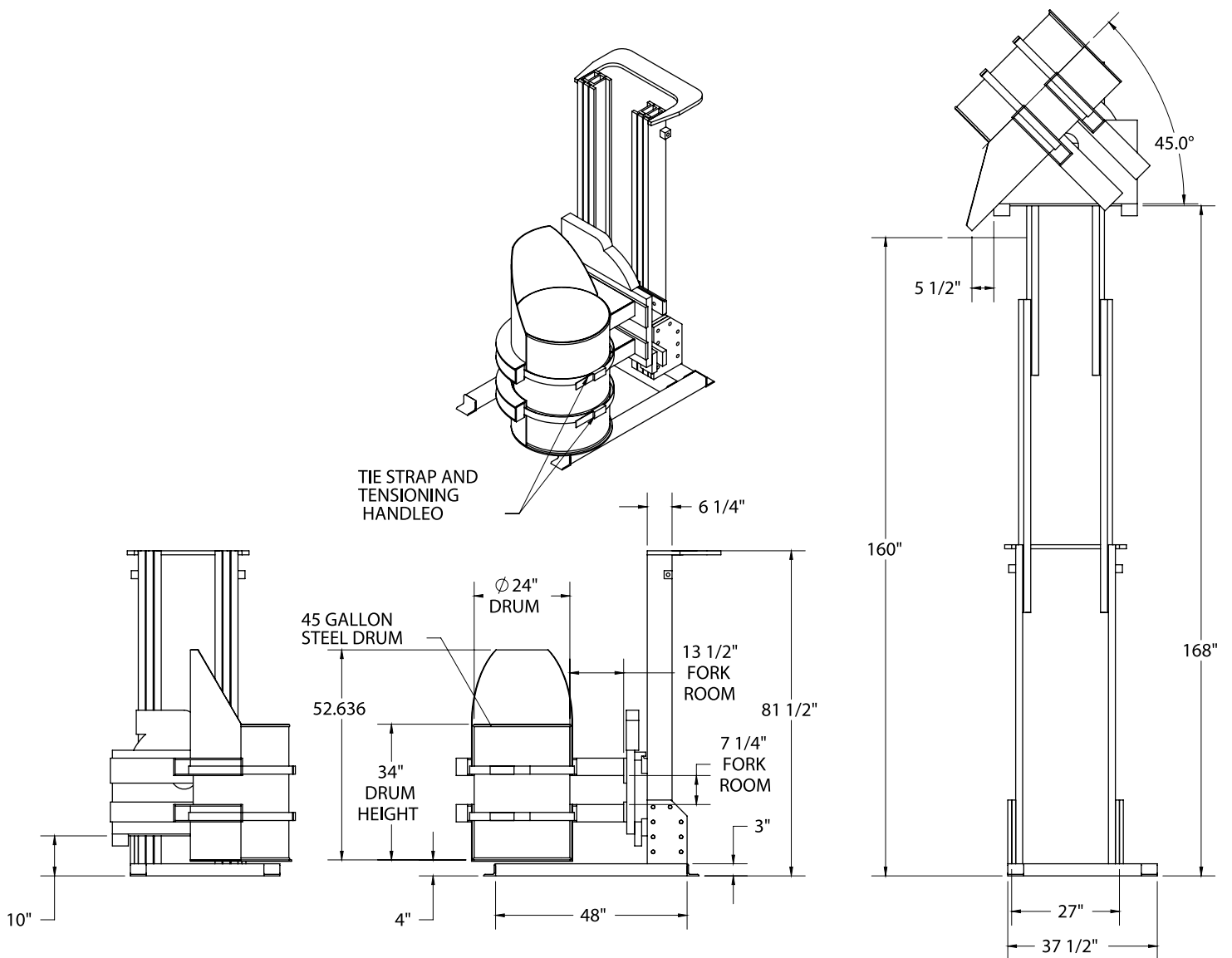
- Capacities from 800 lbs to 4,000 lbs
- Lift heights to 160"
- Standard and custom solutions
- Stainless steel in 304L and 316L
- Epoxy coated with stainless ingredients containers
- Enamel painted units
- Dump angle to 45 degrees
- Powered drive options
- Available, electric and hydraulic models





Heavy Duty Stationary & Portable Ingredient Lifts & Dumpers

Drawings

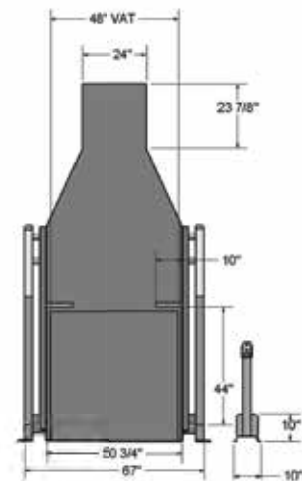
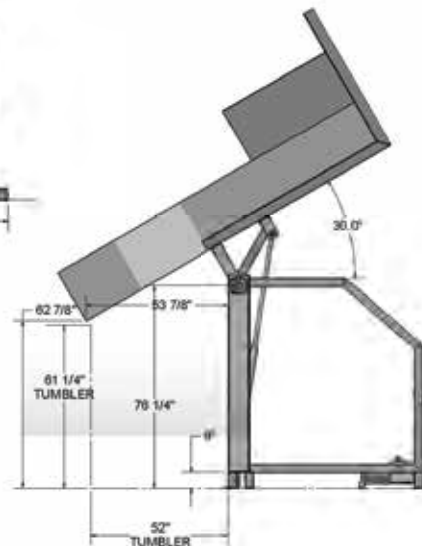
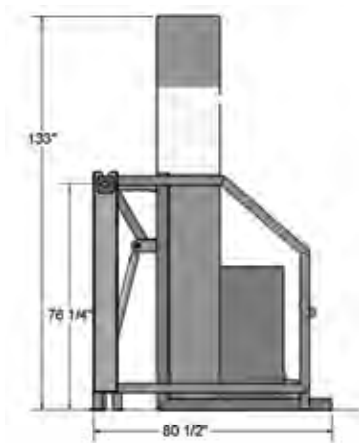




Stainless Steel Dumpers

Features

- 100% Stainless steel Angle + Plate Design and no tube is used in the design
- Available in 304L and 316L stainless steel
- Capacities to 3,000 lbs
- Finishes 2B, electro polished
- Clean room compliant
- For Food, pharmaceutical, chemical and other washdown applications
- Custom designs
- UL approved



SL D SS 135-30 3000 lbs. capacity
Various dump heights available



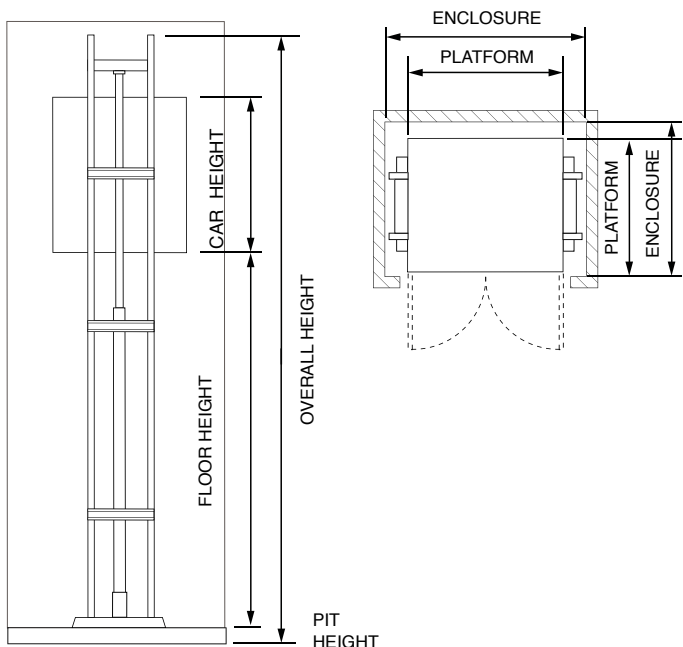
Material Lifts | Freight Lifts Personnels Lifts

Features

- Meets or exceeds elevator safety standard
ASME A 17.1 and CSA B44
- Capacities from 500 to 10,000 lbs
- Type A and type B where personnel are permitted to ride
- Cantilever and dual column models
- Lift heights to 200 inches (higher models are permitted in some areas)
- Platform sizes 48" x 48" to 72" x 120"
- Custom sizes available
- Flow through models available
- Stainless steel models available



Drawings



Options

- Platform controls
- Two stage hydraulic cylinder
- Car lighting, alarm bells and emergency lights
- Galvanized, epoxy coated and stainless steel
- Emergency lowering system



Stainless Steel Tugger

2,500 kg / 5,500 lbs capacity

Features

- Can be used in a wide variety of applications.
- Very compact design makes the machine extremely manoeuvrable and very easy to take it with you in bus, car, truck or any vehicle
- Very easy to connect the hook to the object in an instant with almost no effort.
- High quality Curtis Speed Controller, which is programmable according to your needs.
- Motivated employers and more productivity.
- Special designs are acceptable for special applications.



Technical Data

MODEL:	SM2500
DRIVING MOTOR:	DC motor 24V, 300W
TRACTION CAPACITY:	2,500 kg 5,550 lb
TRAVEL SPEED:	0-6 km/hour
SPEED CONTROLLER:	Curtis Band & Speed and acceleration are freely programmable
BATTERY:	Build-in 24V/80A
CHARGER:	Build-in 24V/10A
TIRES:	Solid ø250 X 85mm 10" x 3.5"
NET WEIGHT INCL. BATTERY:	220 kg 485 lb
WIDTH:	500 mm 19.6"
LENGTH WITHOUT HOOK:	930 mm 37" (handle in the lowest position)
HANDLE HEIGHT:	1020-1545 mm 40" x 61"
OVERALL HEIGHT:	900 mm 35"
STANDARD PROVIDED WITH:	Battery, battery charger, standard hook
OPTIONS:	Special hooks, no-marking solid tire

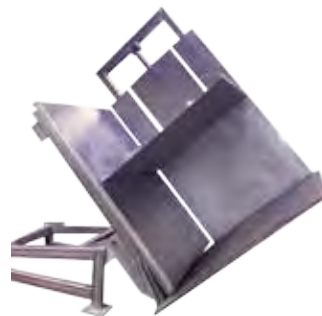




Stainless Steel Pallet & Standard Pallet Inverter

Features

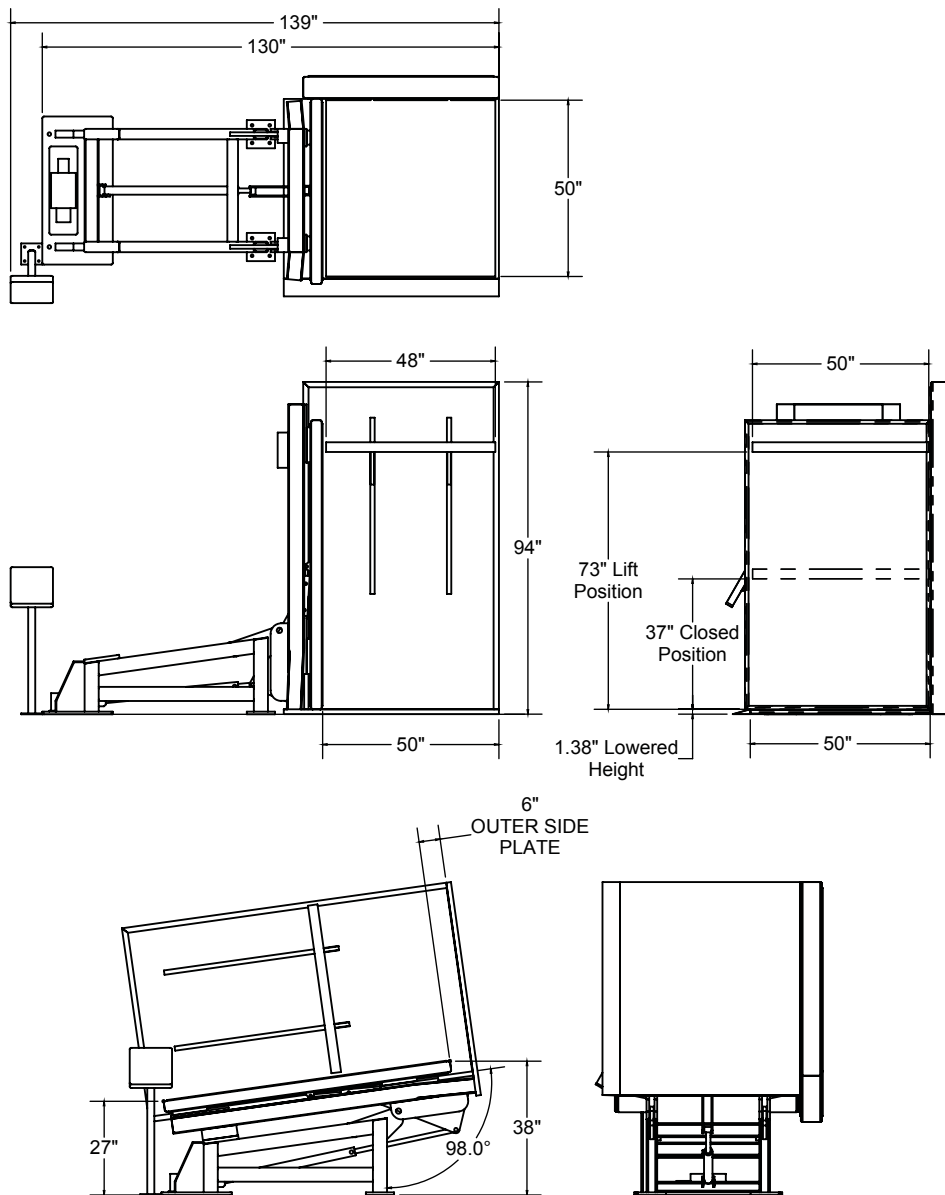
- 3,000 to 4,500 lbs capacity
- Quality North American components & off the shelf parts for maintenance
- Load with a pallet truck
- Floor level access so the inverter can be loaded with a pallet rack
- Adjustable height clamp from 75" to 120"
- Faster cycle times allows operator to remove pallets and spacers in record times for fast return on investment
- Stainless steel is standard and mild steel, epoxy coated are available
- Off the shelf UL/CSA electrical panels your needs.





Stainless Steel Pallet & Standard Pallet Inverter

Drawings





Powered Trolley

Features

- Self-propelled with high technology motor and transmission shaft and speed controller
- Electric magnetic brake to ensure stop in time
- Different table size is available
- Handrail is optional



Ergonomic Tilter Handle



Built-in Charger



Technical Data

MODEL	XFP500A	XFP500B
Capacity	500 kg / 1,102 lbs	500 kg / 1,102 lbs
Min. Height	330mm / 13"	330mm / 13 inches
Platform size	1,220mm x 630mm / 48" x 24.8"	1,400mm x 760mm / 55" x 29.9"
Drive motor	DC24V	DC24V, 500W
Battery	2x12V, 33Ah	2x12V, 33Ah
Overall size	1,380mm x 630mm x 1,080mm / 54.3" x 24.8" x 42.5"	1,550mm x 760mm x 1,080mm / 61" x 29.9" x 42.5"
Net weight	110 kg / 242.5 lbs	115 kg / 253.5 lbs